

Note on English translation / Hinweise zur englischen Fassung

This is a translation of the product data sheet valid in Germany.

All stated details and properties are in compliance with the regulations of the German standards and building regulations. They are only applicable for the specified products, system components, application rules, and construction details in connection with the specifications of the respective certificates and approvals.

Knauf Gips KG denies any liability for applications outside of Germany as this requires changes acc. to the respective national standards and building regulations.



Drywall Systems

E131.de

Product Data Sheet

2019-10

SYSTEM D131 BS30

Access panel element for Knauf free-spanning ceiling with fire resistance

Product description

SYSTEM D131 BS30 is an access panel consisting of:

- Anodised aluminium outer frame
- Fully detachable hatch with aluminium frame for lay-in assembly
- Flush screw fastened gypsum board ex-works
- Permanent fire protection layer

Properties and added value

- Can be used for cladding thickness 18 mm
- Retrofitting is possible

Field of application

Installation in Knauf free-spanning ceilings D131.de with fire resistance class (F30 solely from below or from below and from above) with cladding thicknesses 18 mm.



System variants

Fire resistance class		System		Cladding (lateral application)			Furring channel	Insulation layer Required for fire resistance	
For fire exposure		D131.de Free-spanning ceiling F30 solely from below	D131.de Free-spanning ceiling F30 solely from below and from above	Knauf Fire-Resistant Board	Diamant	Minimum thickness mm	Max. axial clearances mm	Minimum thickness mm	Min. density kg/m³
From below	From above								
F30	–	plus		•		18	625	Mineral wool 40	–
		plus			•	18	625		
F30	F30		plus	•		18	625	Mineral wool 60	30
			plus		•	18	625	Alternative Mineral wool 40	40 plus

S Mineral wool insulation layer acc. to EN 13162, non-combustible, melting point ≥ 1000 °C acc. to DIN 4102-17 (insulating materials e.g. from Knauf Insulation)

G Mineral wool insulation layer acc. to EN 13162, non-combustible (insulating material, e.g. from Knauf Insulation)

Certificate of Usability

Fire resistance proof

■ AbP P-3964/2172-MPA BS

The specifications marked with **plus** offer additional application options, which are not directly included in the Certificate of Usability. On the basis of our technical assessments, we assume that these marked design solutions can be assessed as a non-significant divergence. On request, we can make the documentation on which this assessment is based, such as surveyors' reports or technical assessments, available to you together with the Proof of Usability. We recommend that a non-significant divergence be coordinated and authorised in advance in consultation between the persons responsible for fire resistance and/or the relevant authorities.

Installation

The access panel opening must always be arranged between the free-spanning profiles of the suspended ceiling. Thus the introduction of a trimmer or additional grid is not required.

Cladding

Make the cut-out opening 12 mm larger than the access element size (= clearance).

See the design details and the scheme drawings on the following pages.

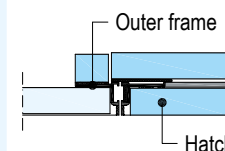
Retrofitting

The cladding must be sawed out for subsequent installation of the access element.

Installation of the access panel

Cladding

18 mm



Install the access element into the opening, lay it on the cladding, align and screw fix with Drywall Screws TB 3.5 x 35 or Diamant Screws XTB 3.9 x 38. At least 3 screws per frame side. Distance between screw centres maximum 170 mm.

Now insert the hatch.

Jointing

Fill outer frame of access element and the ceiling surface with Uniflott. It is not necessary to fill or skim the inner frame to surface quality Q2. Fill in screw heads. For surface quality level Q3 scrape skim the hatch face. Clean outer frame and hatch thoroughly after jointing.

Notes

The clearance from the upper edge of the cladding to the installations must be at least 300 mm.

No cladding board joints are allowed near the access element.

Observe the installation instructions enclosed with the product.

Construct the ceiling systems in accordance with the most current Knauf System Data Sheets.

Coatings and linings

Surface treatment of the access panels with gypsum board inlays in acc. with the Knauf System Data Sheet D13.de.

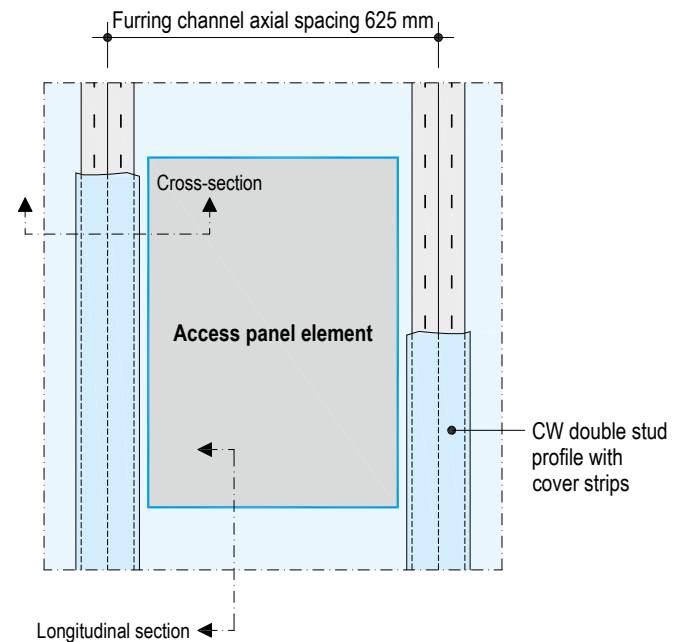
Note for the painter

Generally remove the access panel hatch before painting separately so that no paint penetrates the narrow joint between the hatch and the outer frame. Clean any paint remnants from the frame.

Example, scheme drawing ceiling installation

Installation in Knauf free-spanning ceilings D131.de

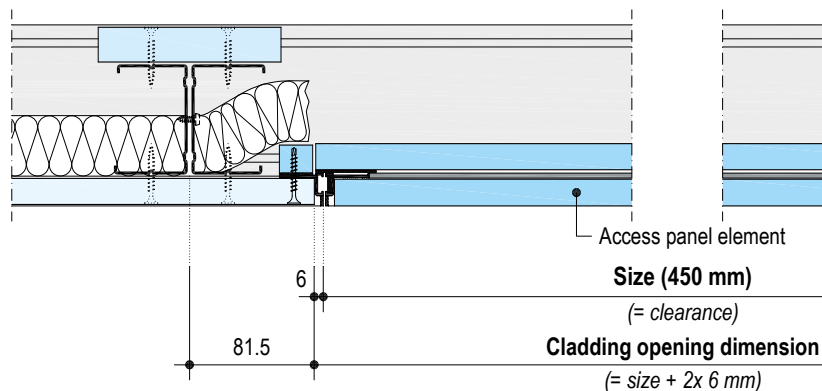
Solely from below and from above



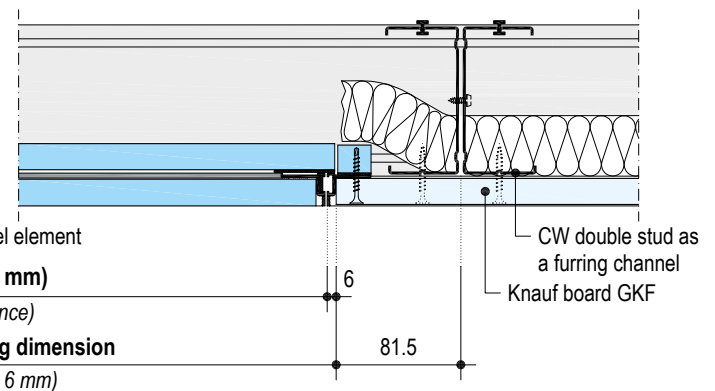
Construction details

Scale 1:5 | Dimensions in mm

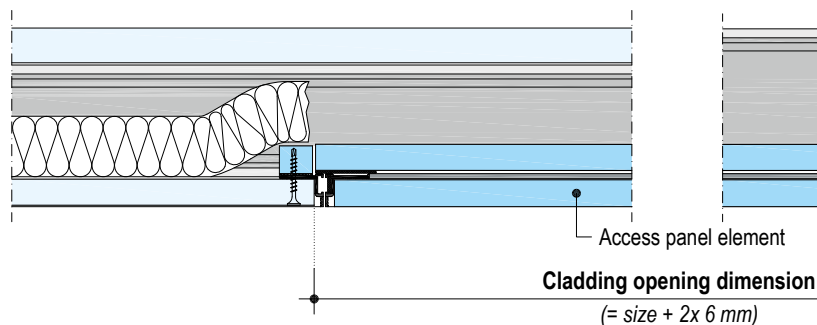
plus E131.de-V1 System D131 BS30 solely from below and from above – vertical section lateral



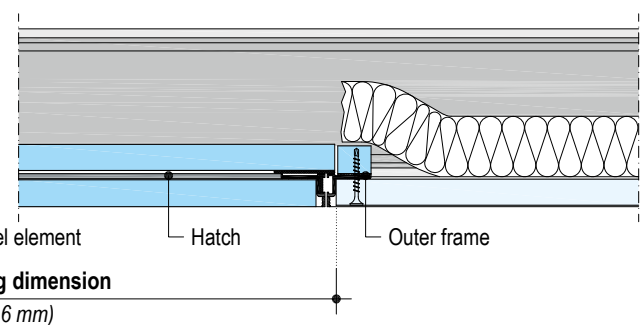
plus E131.de-V2 SYSTEM D131 BS30 solely from below – vertical section lateral



plus E139.de-V1 SYSTEM X D131 BS30 solely from below and from above – vertical section longitudinal



plus E131.de-V4 SYSTEM D131 BS30 solely from below – vertical section longitudinal



Product range

Description	Width x length mm	Weight kg/piece	Packaging unit	Material number	EAN
SYSTEM D131 BS30 <i>free-spanning ceiling</i>	450 x 450	8.6	1 piece / pack	00059764	4003982161024
	450 x 600	11.3		00111921	4003982203571
	Customized	–		00059766	4003982161130

Required specifications for ordering

- Dimension of the access panel (width x length)

Additional options / special designs

- Intermediate dimensions on request, starting from 200 x 200 mm to 450 x 1500 mm
- The access element can be completely removed (lay-in assembly) in case of sufficient space in the plenum
- Locking not possible
- For free-spanning ceilings without fire resistance: Installation of the access panel REVO recommended, e.g. REVO 18 Variant
- Further cladding thickness on request



The iPad App Knauf Infothek now provides all the current information and documents from Knauf Gips KG at any time and in every location in a clear and comfortable way.

[Knauf Infothek](#)

Knauf Direct

Technical Advisory Service:

► knauf-direkt@knauf.de

► www.knauf.de

Knauf Gips KG Am Bahnhof 7, 97346 Iphofen, Germany

All technical changes reserved. Only the current printed instructions are valid. The stated information represents current state-of-the-art Knauf technology. The entire state of approved engineering rules, appropriate standards, guidelines, and rules of craftsmanship are not included herewith. These and all application instructions have to be adhered to separately by the installer. Our warranty is expressly limited to our products in flawless condition. All application quantities and delivery amounts are based on empirical data that are not easily transferable to other deviating areas.

All rights reserved. All amendments, reprints and photocopies, including those of excerpts, require our expressed permission.