

#### Note on English translation / Hinweise zur englischen Fassung

This is a translation of the product data sheet valid in Germany.

All stated details and properties are in compliance with the regulations of the German standards and building regulations. They are only applicable for the specified products, system components, application rules, and construction details in connection with the specifications of the respective certificates and approvals.

Knauf Gips KG denies any liability for applications outside of Germany as this requires changes acc. to the respective national standards and building regulations.



Drywall Systems

E143.de

Product Data Sheet

2019-04

## F-TEC Drystar driving-rain proof

Access panel for wall and ceiling systems in areas of high humidity

### Product description

F-TEC Drystar driving-rain proof is an access panel consisting of:

- Anodised aluminium outer frame
- Openable and fully detachable hatch
- Flush screw fastened Drystar-Board ex-works
- Seal

### Properties and added value

- All-purpose use for cladding thickness 12.5 and 25 mm
- Can be retrofitted
- Can be tiled
- Suitable as standard for installation in solid ceilings

### Field of application

Installation in Knauf drywall partition and ceiling systems with cladding thickness 12.5 and 25 mm as well as in solid walls with splash-water protection requirements (EN 1027, classification EN 12208).

## Installation

It can be installed together with the substructure/grid or when the cladding is applied.

### Trimmer

Arrange trimmers made of CD channels or CW studs / UW runners in the grid in accordance with the dimension of the access panel. Maintain distances between cut-out section and trimmer profiles of at least 25 mm and a maximum of 100 mm. Mount 4 additional suspenders in the corner areas of the access panel when mounting in ceilings.

See the design details and the scheme drawings on the following pages.

### Cladding

Cut out opening in the ceiling/wall cladding approx. 20 mm larger than the access panel size. Screw fasten the cladding to the trimmer profiles as well. If the distance to the installations in the ceiling or wall is less than 200 mm, the installation of the outer frame in the gypsum board must be installed together with the cladding installation (swivelling into the cladding already installed not possible).

### Retrofitting

The cladding must be sawed out for subsequent installation of the access panel (only possible for ceilings). The opening should be backed with circumferential profile pieces (CD, required edge spacing for contact surfaces of the tabs must be considered) and fixed with screws (screw spacing  $\leq 150$  mm).

### Installation of the access panel

Install the supplied tab parts corresponding to the cladding thickness of the Knauf systems on the outer frame.

Cladding	
12.5 mm	
2x 12.5 mm	

At least:

- 1 metal tab per panel side or alt. 2 metal tabs per lock/hinge side with dimensions  $\leq 400 \times 400$  mm
- 2 metal tabs per panel side for dimension  $\leq 600 \times 600$  mm
- 3 metal tabs per panel side for dimension  $\leq 800 \times 800$  mm

Place outer frame of the access panel in the opening, lay it on the cladding with the tabs, align and attach with screws.

Use Drystar Screws XTB or (two screws per metal tab) for the attachment of the tab to the cladding. The required screw length depends on the cladding. Subsequently, insert the hatch and check the lock for proper functioning.

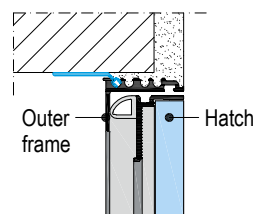
### Jointing

Fill outer frame of access panel and the ceiling/wall surface fully with Drystar Filler. It is not necessary to fill or skim the inner frame to surface quality Q2. Fill in screw heads. For surface quality Q3: Scrape skim hatch face. Preparation for quality level Q4 on request. Clean outer frame, hatch, and in particular the seal thoroughly after filling.

## Installation in solid walls

Design the cut-out in the solid wall to be 18 mm larger than the dimensions of the access panel.

Install the supplied tab parts on the outer frame.



At least:

- 1 metal tab per panel side or alt. 2 metal tabs per lock/hinge side with dimensions  $\leq 400 \times 400$  mm
- 2 metal tabs per panel side for dimension  $\leq 600 \times 600$  mm
- 3 metal tabs per panel side for dimension  $\leq 800 \times 800$  mm

Place outer frame of the access panel in the opening, align and screw fix it using suitable dowels and screws.

Subsequently, insert the hatch and check the lock for proper functioning.

Mount outer frame with plaster.

### Notes

With rectangular ceiling access panels, the lock and hinge system is always mounted as standard on the long side. With wall mounted installation, the lock system is always at the top and the hinge system is always at the bottom.

A clearance of  $\geq 50$  mm must be ensured on the lock side of the hatch rear for opening the panel.

No cladding board joints are allowed near the access panels.

Observe the installation instructions enclosed with the product.

Construct the systems in accordance with the most up-to-date Knauf System Data Sheets.

## Coatings and linings

For surface treatment of the access panels with Drystar Board inlay, follow the Knauf technical brochure Drywall Solutions in Damp and Wet Rooms FN01.de.

### Note for access panels prepared for tiling:

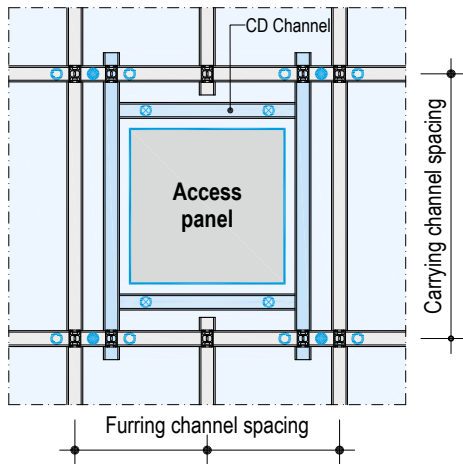
Only apply the tiles using the thin bed method (max. adhesive thickness + tile 9 mm). Fill joint between cladding and outer frame after installation of the access panel. The wall tile can then be directly applied on the front clearance dimension (= size). Install seal (included).

### Note for the painter

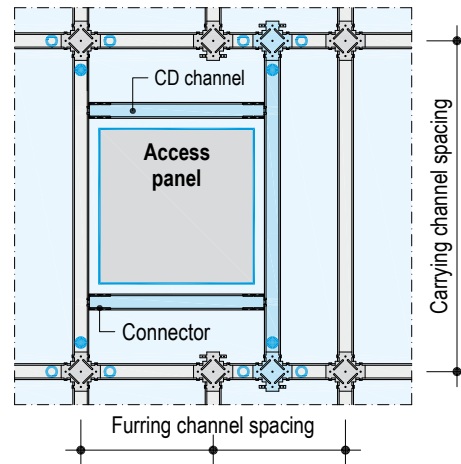
Generally remove the access panel hatch before coating and paint separately so that no paint penetrates the narrow joint between the hatch and the outer frame. Clean any paint remnants from the frame.

### Examples, scheme drawings ceiling installation

#### Double-level metal grid (e.g. D112.de)



#### Flush metal grid (e.g. D113.de)



Additional grid

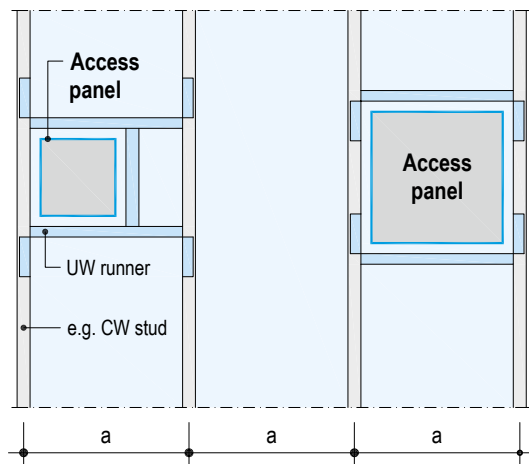
4 additional suspension points (e.g. Nonius suspension)

Alternative suspension points

Universal connectors are required for the trimmers. Further suspenders are required if the suspended profiles are to be exchanged.

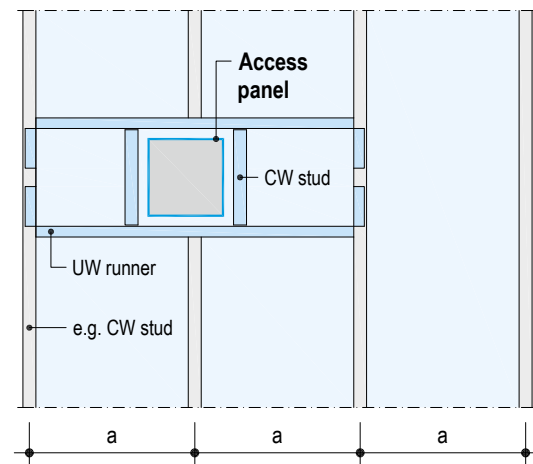
### Examples, scheme drawings wall installation

#### Stud spacing a continuous



Additional grid

#### Stud spacing a with cut stud and trimmer profiles

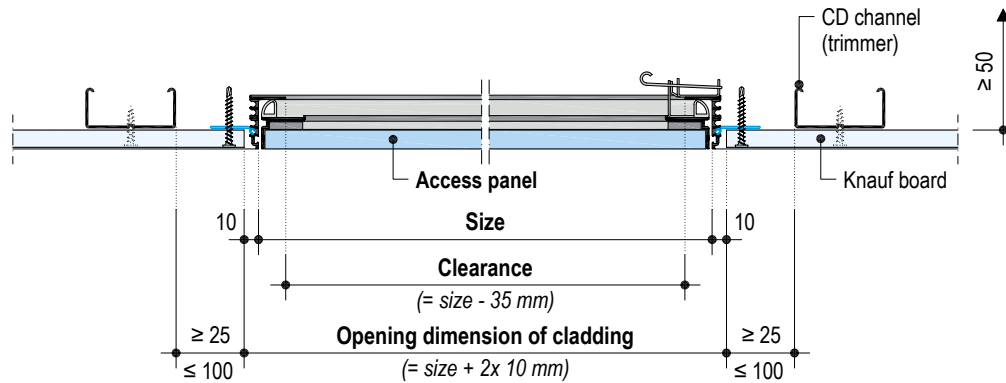


### Construction details

Scale 1:5 | Dimensions in mm

#### E143.de-V1 F-TEC Drystar driving-rain proof – ceiling installation – vertical section

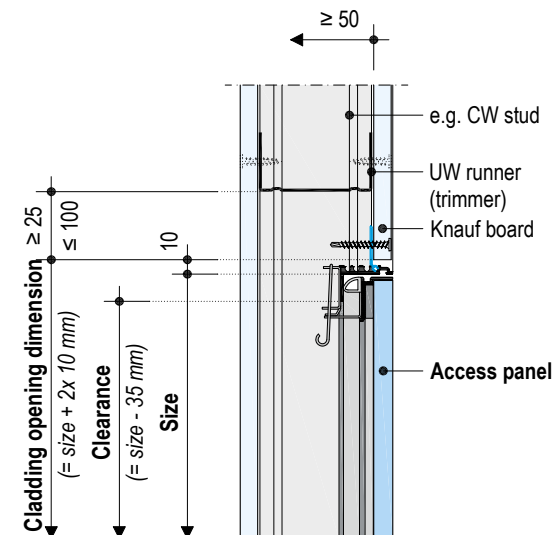
e.g. version 12.5 mm



1) Clearance to basic ceiling / installations

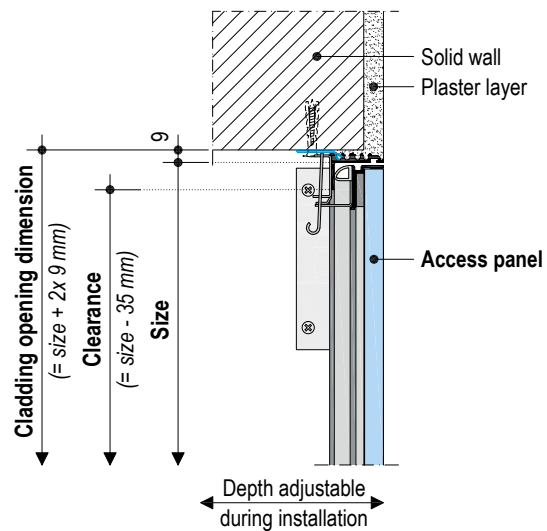
#### E143.de-V2 F-TEC Drystar driving-rain proof – wall installation – vertical section

e.g. version 12.5 mm



2) Opening displacement clearance of the access panel

#### E143.de-V3 F-TEC Drystar driving-rain proof – solid wall installation – vertical section



## Product range

Description	Width x length mm	Weight kg/pieces	Packaging unit	Material number	EAN
F-TEC Drystar driving-rain proof	300 x 300	2.5	1 piece / pack	00174298	4003982214119
	400 x 400	3.6		00174299	4003982214126
	500 x 500	5.2		00174300	4003982214133
	600 x 600	7.0		00174301	4003982214140
	700 x 700	11.1		00174302	4003982214157
	800 x 800	15.8		00174303	4003982214164
	Customized	–		00174304	4003982214171

### Required specifications for ordering

- Dimension of the access panel (width x length)
- Installation, for example, in the ceiling, partition or solid wall
- Additional options / special designs

### Additional options / special designs

- Intermediate dimensions at least 300 x 300 mm, maximum 800 x 800 mm
- Airtight and dust-proof access panel (EN 1026+12207 class 4, suction and pressure)
- Four-square bolt
- Round cylinder lock
- Lock designed for profile cylinder
- Access panel for tiling: Specify the tile dimensions (width x height), joint width, adhesive thickness, tile thickness and cladding thickness (The exact clearance is determined by the tile format)

Note	For on-site tiling
	<ul style="list-style-type: none"> <li>■ Maximum tile thickness: 7 mm</li> <li>■ Maximum area weight of the tiles: 8 kg/m<sup>2</sup></li> <li>■ Maximum dimension of the access panel with tiling: 600 x 800 mm</li> </ul>



The iPad App Knauf Infothek now provides all the current information and documents from Knauf Gips KG at any time and in every location in a clear and comfortable way.

[Knauf Infothek](#)

**Knauf Direct**  
Technical Advisory Service:

▶ [knauf-direkt@knauf.de](mailto:knauf-direkt@knauf.de)

▶ [www.knauf.de](http://www.knauf.de)

**Knauf Gips KG** Am Bahnhof 7, 97346 Iphofen, Germany

All technical changes reserved. Only the current printed instructions are valid. The stated information represents current state-of-the-art Knauf technology. The entire state of approved engineering rules, appropriate standards, guidelines, and rules of craftsmanship are not included herewith. These and all application instructions have to be adhered to separately by the installer. Our warranty is expressly limited to our products in flawless condition. All application quantities and delivery amounts are based on empirical data that are not easily transferable to other deviating areas.

All rights reserved. All amendments, reprints and photocopies, including those of excerpts, require our expressed permission.