


The background of the entire page is a photograph of a building's exterior. It features a large, arched window with a decorative frame. A large roll of white material, likely a restoration system, is draped diagonally across the image, partially covering the window and the building's facade. The material has a textured, slightly wrinkled appearance. The building's facade is light-colored and shows signs of wear and aging. The sky is visible in the upper right corner, and some foliage is on the left.

POPO, STENS, SATT

Restoration systems for every application



What to do with water and salt combined?

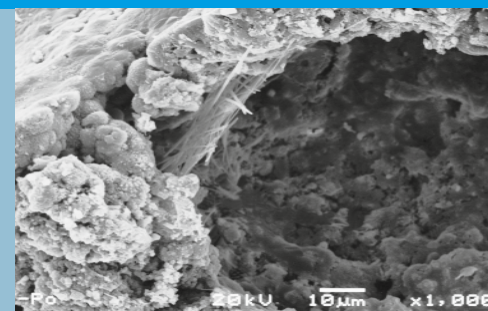
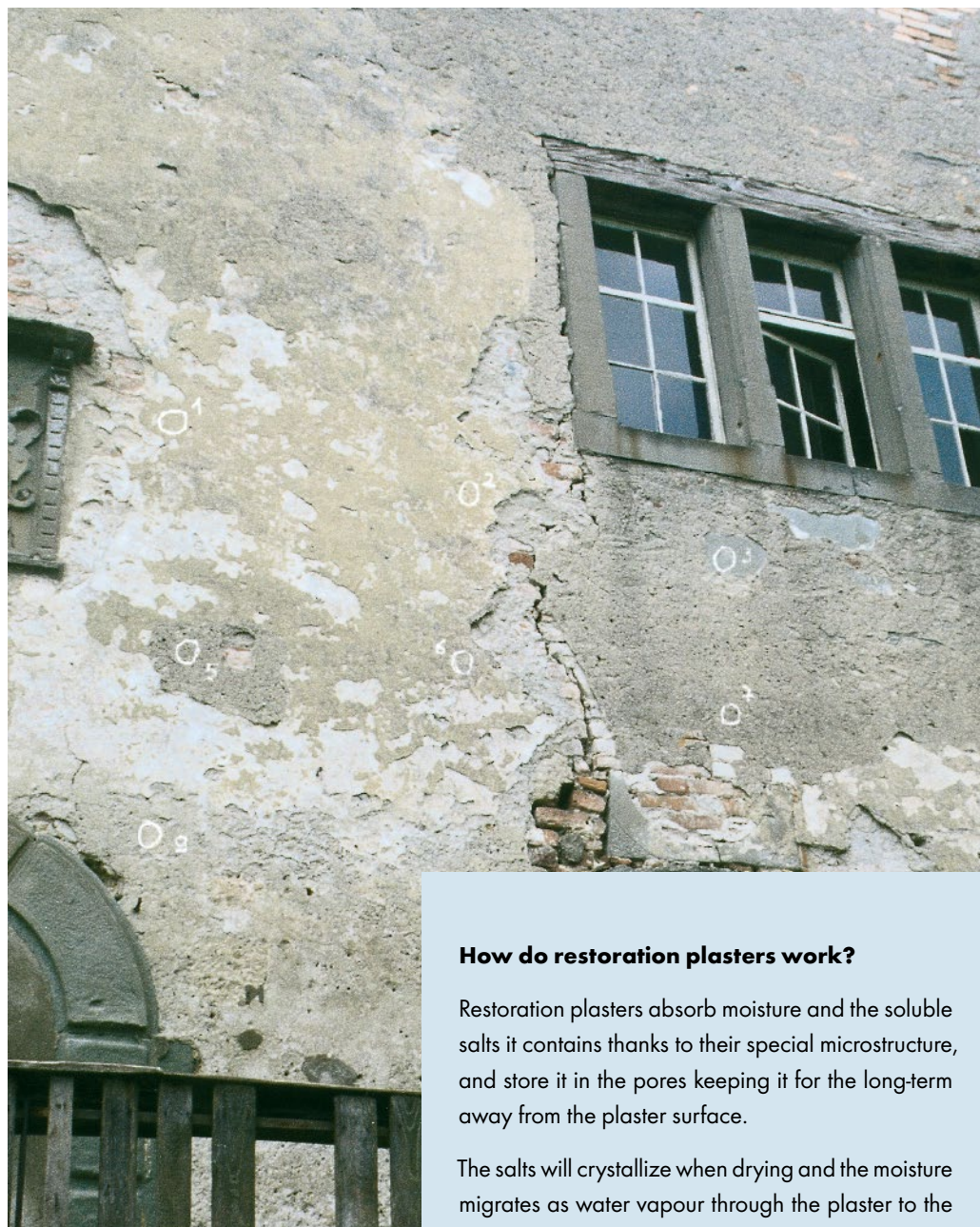
Dry and aesthetic surfaces are achieved by perfectly matched and coordinated restoration concepts and certified restoration systems with WTA certification.



For water, salt and large surfaces

Exceptionally good – for large area salt-exposed façades

Popo – the restoration plaster with the patented, self-active pore structure is particularly cost-effective from the container or as bagged material.



Popo pores under the microscope

What is special about Popo?

The patented Popo pore is rough on the interior. Rough surfaces promote nucleation and improve the crystallization of salt.

How do restoration plasters work?

Restoration plasters absorb moisture and the soluble salts it contains thanks to their special microstructure, and store it in the pores keeping it for the long-term away from the plaster surface.

The salts will crystallize when drying and the moisture migrates as water vapour through the plaster to the surface. The decisive factor here are the air pores in the plaster. Crystallization occurs in these pores. This renders the salts harmless, and the plaster on the surface remains dry in the long-term. Restoration renders have a high share of air pores exceeding 25 % and a high porosity exceeding 40 % of the solid mortar microstructure.

Each restoration scenario is different

Every application case demands a project specific restoration method with Knauf restoration products specially formulated for the purpose. We restore with a system. Starting with analysis of the damage and identification of the salt. Then a suitable package of provisions are drawn up and implemented. Ensuring perfect and permanent restoration.

Your benefits

- Popo is machine-applied without special equipment, using a PFT G4 or similar plaster application machine.
- Popo is also available from a silo.
- Popo expands by up to 30 % on the wall. Apply 16 mm and allow to expand to 20 mm. This saves time, money and is therefore extremely economical.
- Popo is unique and patented.
- Of course Popo is a WTA compliant renovation mortar according to WTA Guideline 2-9-04.
- Popo is environmentally-friendly and WTA certified.





For water, salt and special requirements

Restoration plaster system – optimum with special conditions on salt exposed façades

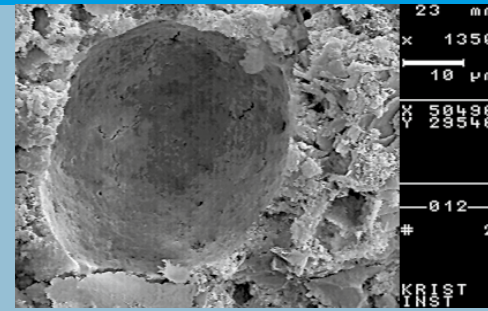
By machine, by hand, comfortable to apply and proven on the market for many years.



Stens Haft is used to provide a well-keyed plaster substrate and has been specially developed for salt exposed substrates. The restoration plasters Stens Grund as well as Stens Hell, but also Popo, are then applied to it. The surface should only be covered up to a max. of 50% to ensure that the moisture can emerge from the masonry.

Stens Grund serves as a levelling layer on uneven surfaces and as a water-inhibiting basecoat for Stens Hell. Stens Grund can be applied in several layers to be up to 80 mm thick.

Stens Hell is used for creating the functional layer. Stens Hell is applied in a thickness of 20 mm and keeps the salts transported by the moisture from the plastered surface for the long-term. Stens Hell is a basecoat but can also be used as a paintable surface.



Stens pores under the microscope

What is special about Stens?

Stens forms the pores with the assistance of tensides. From the preparation of the plastering substrate with Stens Haft, to the establishment of a functional restoration plaster base layer with Stens Grund to the upper functional layer with Stens Hell: This is an all-round restoration plaster system according to WTA!

Your benefits

- Stens Hell can be mixed by machine with the G4 + Rotoquirl or similar plastering machines as well as by hand in a bucket.
- Stens products are available as bagged materials.
- Stens products feature good water vapour permeability and regulated capillary water absorption.
- Stens products are ideal for the plinth area.
- Of course Stens is a renovation mortar system with WTA certificate according to the WTA Guideline 2-9-04.



Where even restoration plasters are no longer sufficient

**The damp wall restoration system Satt –
ideal against high levels of salt and
moisture**

The practical restoration board – when
restoration plasters is no longer the answer.



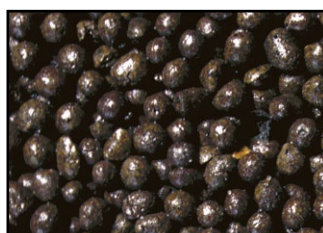
Salt capillary structure under the microscope

What is special about Satt?

Where even premium restoration plasters cannot offer a solution is where Satt comes into its own: The restoration board which can stand up to the highest demands: The surface remains dry, even where you can no longer reach the foundation and where there are high levels of sulphate and nitrate present, with vaulted cellars and former stables. But one task still remains: Removing moist air from the room!

Your benefits

- Satt is resin-bonded and absolutely salt-resistant.
- Satt can be easily cut-to-fit.
- Satt is a ready-to-use restoration board with back ventilation option.
- Satt adhesive bonding with the Duo-Kleber special adhesive and additional fixing with Satt dowels.
- Satt is a plaster base for Sockel-SM or Sockel-SM Pro in exteriors and Rotkalk Fein in interiors. A full surface layer of Knauf reinforcement mesh 5x5 is embedded in the upper plaster layer.



Satt – The system

- Satt restoration board
- Duo Kleber special adhesive
- Satt dowels





USE THE VALUABLE SERVICES FROM KNAUF



KNAUF DIREKT

Our technical advisory service – from professionals for professionals! Choose the direct line to “just in time” consultation and benefit from our extensive experience giving you the assurance that you need.

› www.knauf.com



KNAUF ACADEMY

We offer you fresh knowledge for the challenges of today and tomorrow with top-end seminars for the needs of practice. Use this advantage for you and your employees as education is the key to the future!

› www.knauf.de



KNAUF DIGITAL

Web or App – Technical documentation, calculation tools, interactive animations, and lots more are available around the clock up-to-date and free-of-charge in the digital world of Knauf. Clicks that are really worthwhile!

› www.knauf.de

Knauf Gips KG
Am Bahnhof 7
97346 Iphofen,
Germany

Knauf AMF
Ceiling Systems

Knauf Aquapanel
TecTem® loose fill insulation
material

Knauf Bauprodukte
Professional DIY Solutions

Knauf Design
Competence in Surfaces

Knauf Gips
Drywall Systems
Floor Systems
Plaster & Façade Systems

Knauf Insulation
Insulation system for renovation and new
projects

Knauf Integral
Gypsum fibre technology
for floors, walls and
ceilings

Knauf PFT
Machine Technology and
Plant Engineering

Marbos
Mortar systems for cobble-
stone paving

Sakret Bausysteme
Dry mortars for new projects
and renovations