

Note on English translation / Hinweise zur englischen Fassung

This is a translation of the product data sheet valid in Germany.

All stated details and properties are in compliance with the regulations of the German standards and building regulations. They are only applicable for the specified products, system components, application rules, and construction details in connection with the specifications of the respective certificates and approvals.

Knauf Gips KG denies any liability for applications outside of Germany as this requires changes acc. to the respective national standards and building regulations.

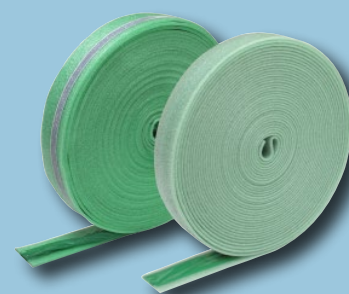


Floor Systems

K436a.de

Product Data Sheet

2022-01



Edge Insulation Strip FE

Edge insulation strips with connection foil for screed

Product description

Edge Insulation Strip FE are highly-elastic edge insulation strips made of special PE foam with laminated foil strips. The Edge Insulation Strip FE 10/120 is also self-adhesive on the rear.

Storage

Store in a dry place.

Properties and added value

- Very good sound insulation
- Stable
- With laminated foil strips for a sealed connection of the separating layer without hollows
- Easy and fast application
- Edge Insulation Strip FE 10/120, self-adhesive

Field of application

Edge Insulation Strip FE offers certainty for the installation of flowing screeds and acts to separate the wall and floor. They are attached to all rising constructional components, to avoid sound bridges and contacts that can impair the insulation properties.

Use edge insulation strips made of mineral wool in case of fire protection requirements.

Application

Note	Edge Insulation Strip FE 10/120 To guarantee the good self-adhesive properties with Edge Insulation Strip FE 10/120, pay special attention to: <ul style="list-style-type: none"> ■ Dust-free substrates ■ Push on sufficiently firmly ■ Store in dry rooms with a normal temperature range
-------------	--

Application

Mark the completed height of the screed on all rising constructional components and fix the edge insulation strips with upper edge at least 5 mm higher than the completed height using staples (Edge Insulation Strip FE 8/100) or glue (Edge Insulation Strip FE 10/120) them instead. Do not staple at screed cross-section height. The edge strips must protrude over the upper edge of the screed, at least up to the surface of the covering. Ensure that there are no gaps. If required, arrange 2 strips above one another. Tape off the joints in the edge insulation strips to ensure that a bridge to the mortar (sound bridges) is not created. Apply edge insulation strips to pipes, radiators, etc.

Note	Refer to the technical brochure Knauf Floor Systems - Constructions and Application Technology F20.de for application of the insulation and separating layer.
-------------	---

Edge Insulation Strip FE 10/120



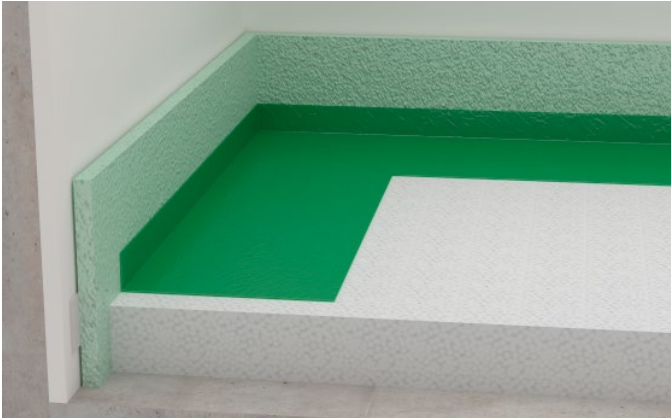
1. (a) Remove the protective foil on the self-adhesive edge and press the edge insulation strip on with sufficient force so it sticks. The upper section has slots to ensure ease of separation.

Edge Insulation Strip FE 8/100

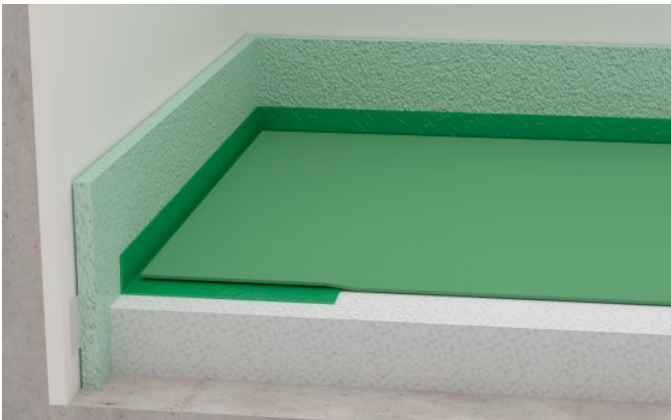


1. (b) Attach the edge insulation strips with staples. Do not staple at screed cross-section height. Do not stretch at protruding corners.

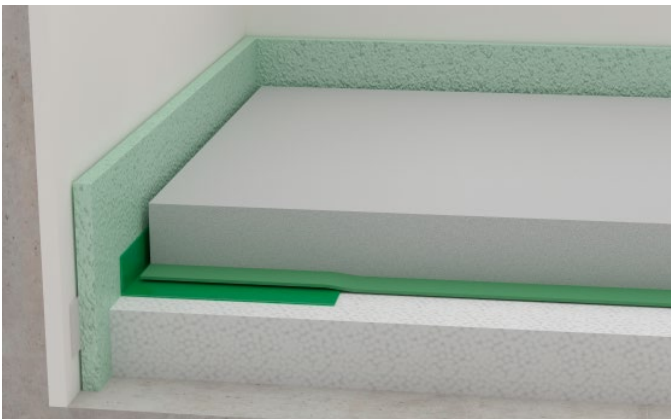
Edge Insulation Strip FE 8/100 and Edge Insulation Strip FE 10/120



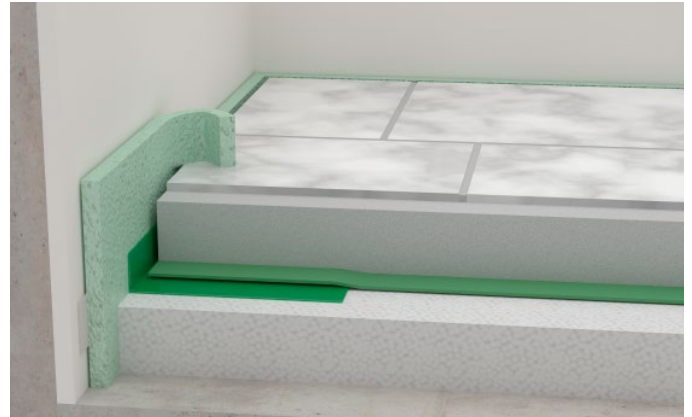
2. Slide insulation under the foil of the edge insulation strip and loosen the foil by pulling the edge insulation strip smooth and lay it on the insulation. With several insulation material layers, apply the edge insulation strips with the uppermost insulation layer.



3. Lay Schrenzlage synthetic coated kraft paper with an overlap of at least 80 mm on the joints. On the connection to the walls, they are applied to the installed foil strips of the edge insulation strip.



4. In the area connecting to the wall, apply Schrenzlage synthetic coated kraft paper on the foil of the edge insulation strip (do not allow to stand up on the edge), then pour the flowing screed.



5. Only remove the protruding part of the edge insulation strip (in acc. with DIN 18560-2) after the floor covering is applied.

Technical data

Designation	Standard	Unit	Edge Insulation Strip FE
Building material class	–	Class	E

Product range

Designation	Roll length	Roll length	Material number	EAN
Edge Insulation Strip FE 8/100	40 m	8 rolls / package	00003482	4003982131201
Edge Insulation Strip FE 10/120	40 m	8 rolls / package	00003483	4003982131225

**Observe safety data sheet!**

For safety data sheets see

pd.knauf.de

Videos for Knauf systems and products can be found under the following link:

youtube.com/knauf

The Knauf Infothek App now provides all the current information and documents from Knauf Gips KG at any time and in every location in a clear and comfortable way..

knauf.de/infothek**Knauf Direct**

Technical Advisory Service:

 knauf-direkt@knauf.com
 www.knauf.de
Knauf Gips KG Am Bahnhof 7, 97346 Iphofen, Germany

All technical changes reserved. Only the current printed instructions are valid. The stated information represents current state-of-the-art Knauf technology. The entire state of approved engineering rules, appropriate standards, guidelines, and rules of craftsmanship are not included herewith. These and all application instructions have to be adhered to separately by the installer. Our warranty is expressly limited to our products in flawless condition. All application quantities and delivery amounts are based on empirical data that are not easily transferable to other deviating areas.

All rights reserved. All amendments, reprints and photocopies, including those of excerpts, require our expressed permission.